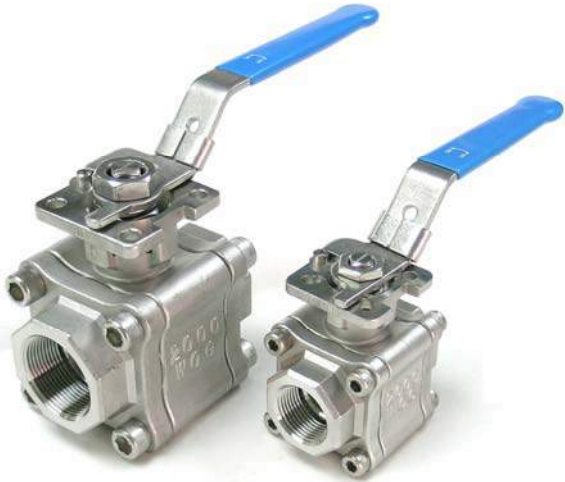


Model: FSB-370

Rating: 2000 CWP

Design feature:

- Applications for Hydraulic, Chemical, Steam, Oil/ Gas, Oxygen, Vacuum.
- Extremely Rugged 3-Piece Design Withstand Extremes In Piping Enclose Bolt Design, Stress And Thermal Shock.
- Direct-mounting of actuator to valves, low cost and easy automation.
- Integral twin pattern ISO 5211 mounting pad for double & spring return actuator.
- Self-adjusting stem packing assembly with Belleville spring for temperature fluctuations, vibration, and is secured.
- API 607 Fire-Safe approved.
- Thrust washer prevents galling, reduces torque and provides secondary stem seal.
- Long cycle life, Low uniform torques.
- Bottom Entry Blow-Out Proof Stem design Provides Maximum Safety.
- Wide range of seat & seal materials is available.
- Thread & Socket-Weld Overall Length to DIN 3202 M3
- Investment cast body construction.
- DIN EN 10204-3.1 Certificate Available

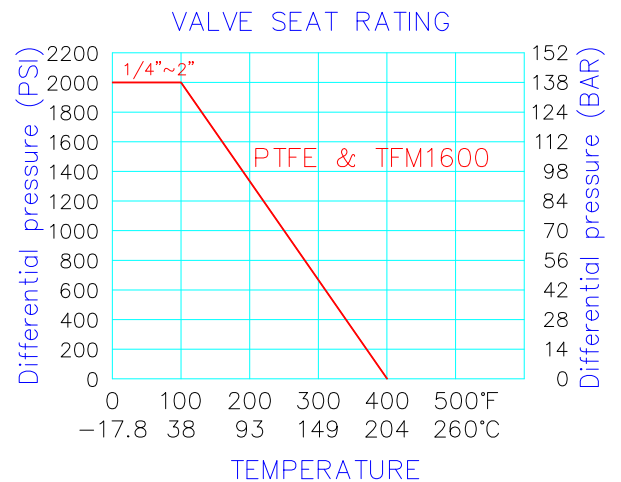
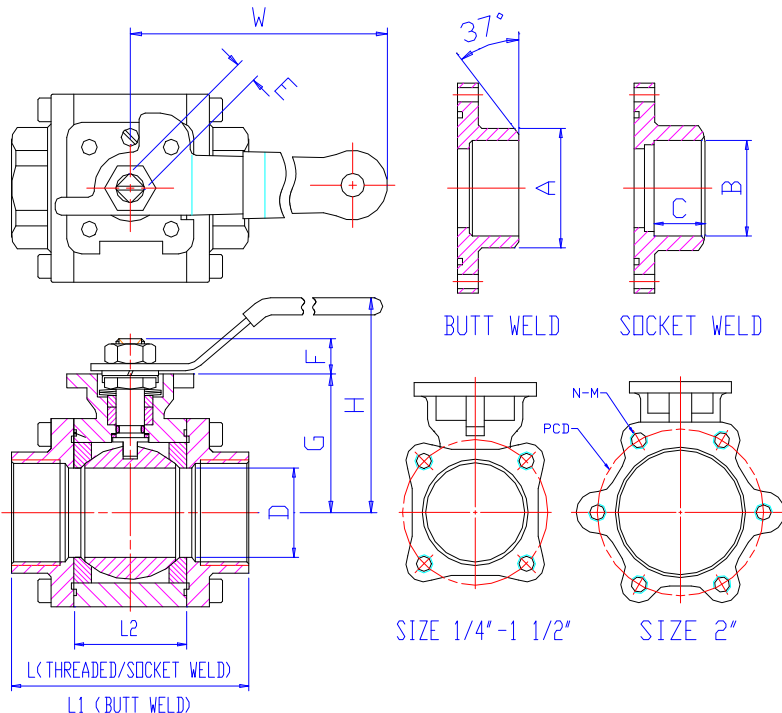


Specifications:

- Construction: 3-pc bolted body side-entry floating ball design.
- Flow bore: Full/ Standard port.
- Rating: 2000 PSI; 150 PSI Saturated Steam.
- Temperature: -20°F ~ 400°F (PTFE/ R.PTFE)
- Materials: ASTM CF8M,CF8, WCB
- Size range:
Full port: 1/4" ~ 4".
Standard port: 1/4" ~ 2-1/2"

Standard:

- Female pipe Threaded to NPT, DIN 259/2999, BS21..
- Inspection & testing according to API 598.
- API 607 4th Edition Fire-Safe Test approved.
- PED 97/23/EC; ISO 9001.



Dimensions List (Full Port)

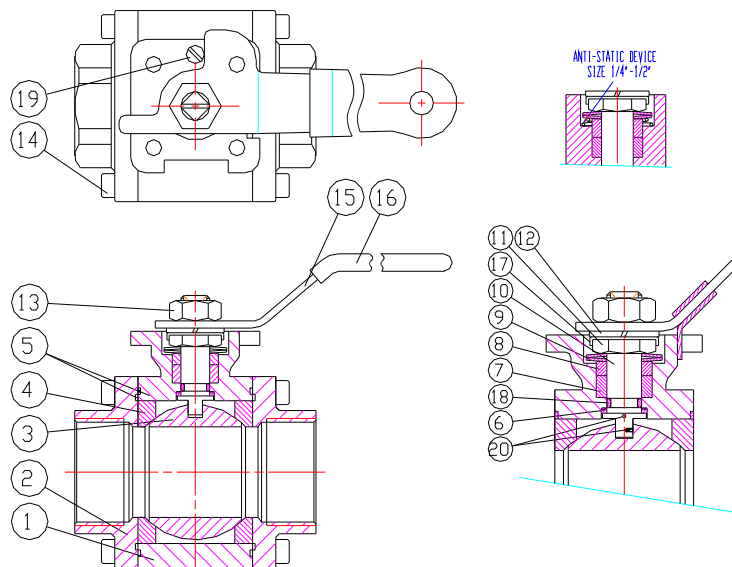
T1:Breaking torque T2:Operation torque (kgf-cm)

Unit: mm

| Size | D | L | L1 | L2 | N-M | PCD | W | H | E | F | G | A | B | C | ISO 5211 | W(kg) | T1 | T2 |
|--------|------|-----|-----|-------|--------|-------|-----|-----|----|----|-------|-------|-------|----|----------|-------|-----|-----|
| 1/4" | 11 | 65 | 70 | 24.8 | 8-M8 | 53.7 | 140 | 70 | 9 | 8 | 37.5 | 13.8 | 14.2 | 10 | F04 | 1.1 | 30 | 15 |
| 3/8" | 11 | 65 | 70 | 24.8 | 8-M8 | 53.7 | 140 | 70 | 9 | 8 | 37.5 | 17.3 | 17.6 | 10 | F04 | 1.1 | 30 | 15 |
| 1/2" | 14 | 75 | 75 | 24.8 | 8-M8 | 53.7 | 140 | 70 | 9 | 8 | 37.5 | 21.7 | 21.8 | 13 | F04 | 1.1 | 30 | 15 |
| 3/4" | 20.5 | 80 | 90 | 34.4 | 8-M8 | 62.9 | 180 | 90 | 11 | 11 | 52 | 27.2 | 27.2 | 15 | F04, F05 | 1.6 | 50 | 45 |
| 1" | 25 | 90 | 100 | 39.6 | 8-M8 | 71.8 | 180 | 100 | 11 | 11 | 60 | 34 | 33.9 | 15 | F04, F05 | 2.2 | 65 | 50 |
| 1-1/4" | 31.5 | 110 | 110 | 45.1 | 8-M10 | 80.7 | 215 | 112 | 14 | 17 | 72 | 42.7 | 42.7 | 15 | F07 | 3.3 | 180 | 130 |
| 1-1/2" | 37 | 120 | 125 | 52.8 | 8-M12 | 94.3 | 215 | 115 | 14 | 17 | 76 | 48.6 | 48.8 | 16 | F07 | 4.6 | 200 | 190 |
| 2" | 50 | 140 | 150 | 67.8 | 12-M12 | 111 | 215 | 133 | 14 | 17 | 93 | 60.5 | 61.2 | 17 | F07 | 7.3 | 210 | 200 |
| 2-1/2" | 65 | 185 | 190 | 90.3 | 12-M16 | 140.5 | 380 | 173 | 22 | 24 | 116.5 | 76.3 | 73.9 | 17 | F07, F10 | | | |
| 3" | 80 | 205 | 220 | 106.3 | 12-M20 | 168 | 380 | 184 | 22 | 24 | 127 | 89.1 | 89.8 | 17 | F07, F10 | | | |
| 4" | 100 | 240 | 270 | 128.9 | 16-M20 | 201.5 | 600 | 242 | 27 | 29 | 159 | 114.3 | 115.3 | 20 | F10 | | | |

Dimensions List (Standard Port)

| Size | D | L | L1 | L2 | N-M | PCD | W | H | E | F | G | A | B | C | ISO 5211 | W (kg) | T1 | T2 |
|--------|------|-----|-----|------|--------|------|-----|-----|----|----|------|------|------|----|----------|--------|-----|-----|
| 1/4" | 11 | 65 | 70 | 24.8 | 8-M8 | 53.7 | 140 | 70 | 9 | 8 | 37.5 | 13.8 | 14.2 | 10 | F04 | 1.1 | 30 | 15 |
| 3/8" | 11 | 65 | 70 | 24.8 | 8-M8 | 53.7 | 140 | 70 | 9 | 8 | 37.5 | 17.3 | 17.6 | 10 | F04 | 1.1 | 30 | 15 |
| 1/2" | 11 | 75 | 75 | 24.8 | 8-M8 | 53.7 | 140 | 70 | 9 | 8 | 37.5 | 21.7 | 21.8 | 13 | F04 | 1.1 | 30 | 15 |
| 3/4" | 14 | 80 | 90 | 24.8 | 8-M8 | 53.7 | 140 | 70 | 9 | 8 | 37.5 | 27.2 | 27.2 | 15 | F04 | 1.1 | 30 | 15 |
| 1" | 20.5 | 90 | 100 | 34.4 | 8-M8 | 62.9 | 180 | 90 | 11 | 11 | 52 | 34 | 33.9 | 15 | F04, F05 | 1.6 | 50 | 45 |
| 1-1/4" | 25 | 110 | 110 | 39.6 | 8-M8 | 71.8 | 180 | 100 | 11 | 11 | 60 | 42.7 | 42.7 | 15 | F04, F05 | 2.2 | 65 | 50 |
| 1-1/2" | 31.5 | 120 | 125 | 45.1 | 8-M10 | 80.7 | 215 | 112 | 14 | 17 | 72 | 48.6 | 48.8 | 16 | F07 | 3.3 | 180 | 130 |
| 2" | 37 | 140 | 150 | 52.8 | 8-M12 | 94.3 | 215 | 115 | 14 | 17 | 76 | 60.5 | 61.2 | 17 | F07 | 4.6 | 200 | 190 |
| 2-1/2" | 50 | 185 | 190 | 67.8 | 12-M12 | 111 | 215 | 133 | 14 | 17 | 93 | 76.3 | 73.9 | 17 | F07 | 7.3 | 210 | 200 |



MATERIALS LIST:

| NO | PART NAME | MATERIAL | NO | PART NAME | MATERIAL |
|----|-------------------|------------|----|--------------------|---------------------------|
| 1 | BODY | CF8M / WCB | 10 | STEM | SS316 / SS304 |
| 2 | ENDCAP | CF8M / WCB | 11 | NUT | SS304 |
| 3 | SOLID BALL | CF8M / CF8 | 12 | SPRING WASHER | SS304 |
| 4 | BALL SEAT | PTFE | 13 | NUT | SS304 |
| 5 | BODY SEAL | GRAPHITE | 14 | BOLT | SS304 |
| | BODY SEAL | PTFE | 15 | HANDLE | SS304 / ZINC PLATED STEEL |
| 6 | THRUST WASHER | GRAPHITE | 16 | HANDLE SLEEVE | VINYL |
| | THRUST WASHER | PTFE | 17 | SADDLE WASHER | SS304 |
| 7 | STEM PACKING | GRAPHITE | 18 | O-RING | VITON |
| 8 | GLAND | SS304 | 19 | STOP PING | SS304 |
| 9 | BELLEVILLE SPRING | SS301 | 20 | ANTI-STATIC DEVICE | SS304 |