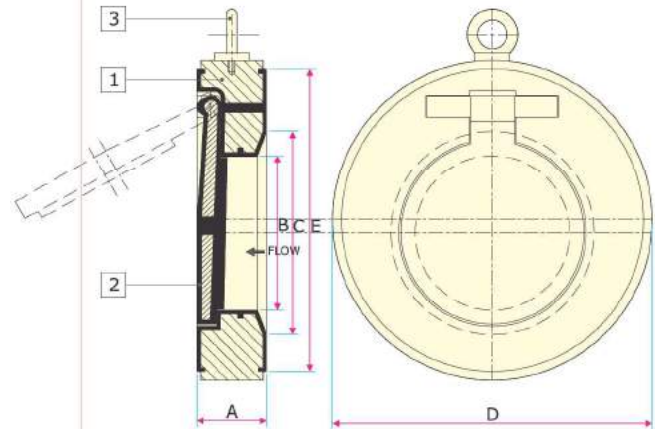


LINED SWING CHECK VALVE



Material Specification

NO.	DESCRIPTION	QTY.	MATERIAL
1	BODY	1	CS / SS + 3 mm THK. PPH/PVDF / FEP/ PFA LINING
2	FLAP	1	CS / SS + 3 mm THK. PPH/PVDF / FEP/ PFA LINING
3	EYE-HOOK	1	STEEL PLATED

HYDRO TEST PRESSURE:
 BODY : 18 Kg/Cm²
 SEAT : 13 Kg/Cm²

Dimensional Table Rating : 150 Class

SIZE (NB)	A±3	B	C	D	E
80 mm	46	44	60	134	127
100 mm	52	65	80	171	152
150 mm	56	111	128	217	207
200 mm	60	133	175	274	260
250 mm	68	184	224	335	317
300 mm	78	232	272	405	377
350 mm	88	245	285	445	410

Notes:

- Manufacturing Standards**
 Design : Manufacturer's Standard
 Face To Face Dimension: Manufacturer's Standard
- Spark Test**
 15 KVDC
- Standard Resin Specifications For Lining**
 PTFE : ASTM D 1457
 PVDF : ASTM D 3222
 PFA : ASTM D 3307
 FEP : ASTM D 2116
- Material**
 CS : ASTM A 216 GR. WCB
 SS : ASTM A 351 CF 8/ASTM A 351 CF 8 M