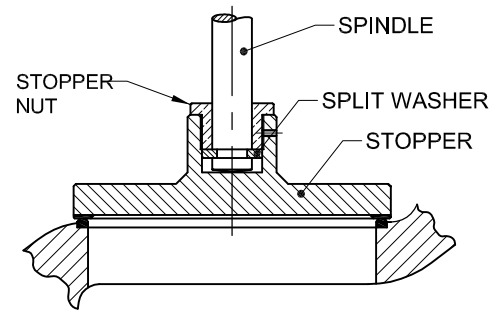
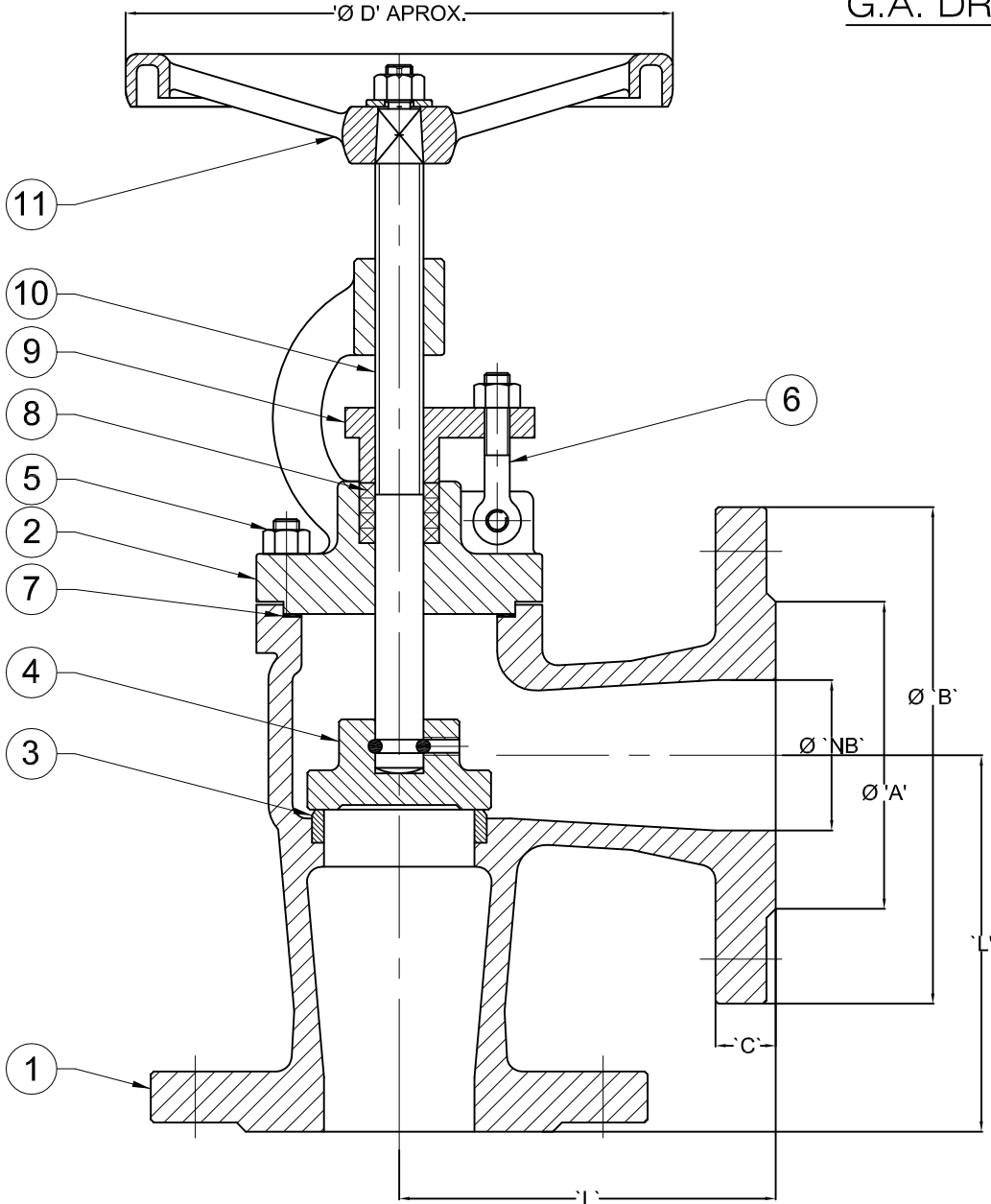


G.A. DRG.



ASSEMBLY DN 125 & ABOVE

Ø NB	A	Ø B	Ø C	D	L
40	88	150	19	150	115
50	102	165	20	150	125
65	122	185	20	180	145
80	138	200	22	180	155
100	162	235	24	225	175
125	188	270	26	225	200
150	218	300	26	300	225
200	280	375	30	420	275
250	345	450	32	500	325

VALVE MOUNTING DIMENSIONS

\* A : 15 to 65 mm S.S. 410 & B : 80 to 250 mm M.S. WITH 13 % CROME CLADD

11	HAND WHEEL	ALUMINUM / CAST IRON
10	SPINDLE	STAINLESS STEEL AISI 410
9	GLAND PLATE	M.S. FORGED
8	GLAND PACKING	PURE GRAFOIL
7	GASKET	PURE GRAPHITE
6	EYE BOLT	CARBON STEEL
5	STUD & BOLT	ASTM A 193 GR B7 & A 194 GR 2H
4	STOPPER	SEE NOTE
3	BODY RING	CARBON STEEL WITH 13 % CHROME FACIN
2	BONNET	GSC 25 N / ASTM - A - 216 GR WCB
1	BODY	
No.	DESCRIPTION	MATERIAL

MATERIAL & DESCRIPTIONS

NOTE :- ALL DIMENSIONS ARE IN mm

SPECIFICATION OF STANDARDS		
DESIGN	DIN 3356	
FACE TO FACE	F 1	
DIMENSIONS	DIN 2501	
TEST & INSPECTION	API 598	
TESTS PRESSURE (Kg / Cm <sup>2</sup> )		
	HYDROSTATIC	AIR
BODY	63	--
SEAT	40	6

TITLE :-		PROJ :-	
<b>PN - 40 ANGLE VALVE</b> ( FLANGE ENDS )			
		DRN BY	L.B.G.
		CHECK BY	A.R.D.
		APPD BY	A.R.D.
		SCALE	N.T.S.
DATE	19.04.2012		

NOTE :-  
1. AS CONTINUOUS IMPROVEMENT IN DESIGN PROCESS THE DIMENSIONS MENTIONED HERE ARE SUBJECTED TO CHANGE

DRG. No. DV / ANG / PN - 40 / C / 01  
REV. No. 0

**Dalsons Valves**  
D- 58, MIDC MIRAJ BLOCK MIRAJ  
DIST - SANGLI ( M.S. ) INDIA