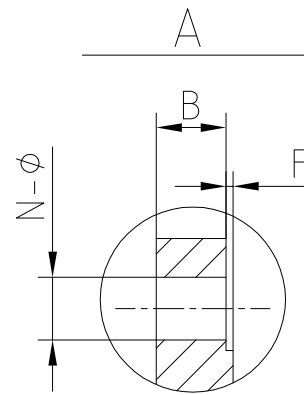
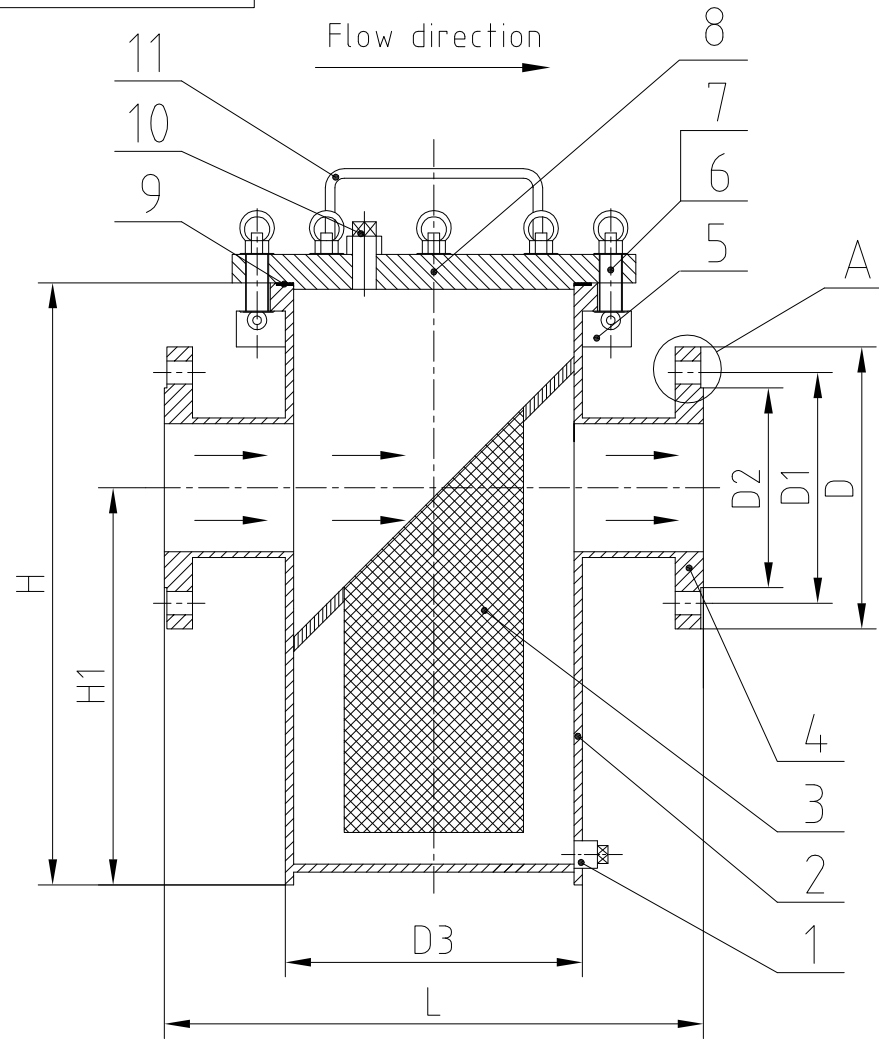


TAG NO. :



Performance Standard

Nominal Bore	NPS	1 1/2"~8"
Nominal Pressure	Class	150LB
Pressure Test		
Shell Test	3.0	MPa
Seal Test	/	
Backseat Test	/	
Air Test	0.6	
Working Temperature	-29°C ~ +425°C	
Suitable Medium	Water, Oil, Gas, Steam, etc	

- Flange dimension conforms as to:ASME B16.5 RF  
Face finish 125-250 AARH
- Testing record as to:API 598
- Face-To-Face demension standard as to: MFR STD
- Pressure-temperature conforms as to: ASME B16.34
- Design & Manufacture as to:ASME B31.3
- Drain plug shall be at the lowest possible position
- Drain plug NPT threaded standard as to:ASME B1.20.1
- Valve as per NACE MR-01-75(2002) requirement
- Orange epoxy

1	Nondestructive Testing		
1.1	Pressure Test	API 598	Yes
1.2	Chemical composition certification	Mandatory	Yes
1.3	Penetrant Test	All Body Surface	Yes
1.4	Magnetic particle testing	All Body Surface	Yes

SIZE NPS	L	D3	H	H1	D	D1	D2	B	N-φ	F
1 1/2"	280	φ108	300	180	φ125	φ98.4	φ73	16	4-φ16	2
2"	280	φ133	300	180	φ150	φ120.7	φ92	17.5	4-φ19	2
2 1/2"	330	φ133	350	220	φ180	φ139.7	φ105	21	4-φ19	2
3"	340	φ159	400	260	φ190	φ152.4	φ127	22.5	4-φ19	2
4"	420	φ219	470	310	φ230	φ190.5	φ157	22.5	8-φ19	2
5"	500	φ273	540	380	φ255	φ215.9	φ186	22.5	8-φ22	2
6"	500	φ273	620	430	φ280	φ241.3	φ216	24	8-φ22	2
8"	560	φ325	780	530	φ345	φ298.5	φ270	27	8-φ22	2

11	Handle	ANSI 1025		
10	Vent Plug	ASTM A105		1/2" WITH NPT
9	Gasket	SS316+GRAPHITE		Inner ring spiral wound gasket
8	Cover	ASTM A105		
7	Quick-Open Nut	A194 Gr. 2H		
6	Quick-Open Bolt	A193 Gr. B7		
5	Bolt Retainer	ANSI 1025		
4	Flange	ASTM A105		Slip on flange 150LB-RF
3	Screen	A276 SS316		Mesh:20
2	Body	ASTM A105		
1	Drain Plug	ASTM A105		1/2" With NPT
NO.	NAME	MATERIAL	QTY	REMARK

DATE APPD	Mar. 15, 2015	Quick-Opening Lifting Eyebolt Type Basket Type Strainer	
APPD BY			
CHECK BY			
DSCND BY			
DRAWD BY			
			NPS 1 1/2"~8" Class 150LB RF Body: CS / Trim: SS316