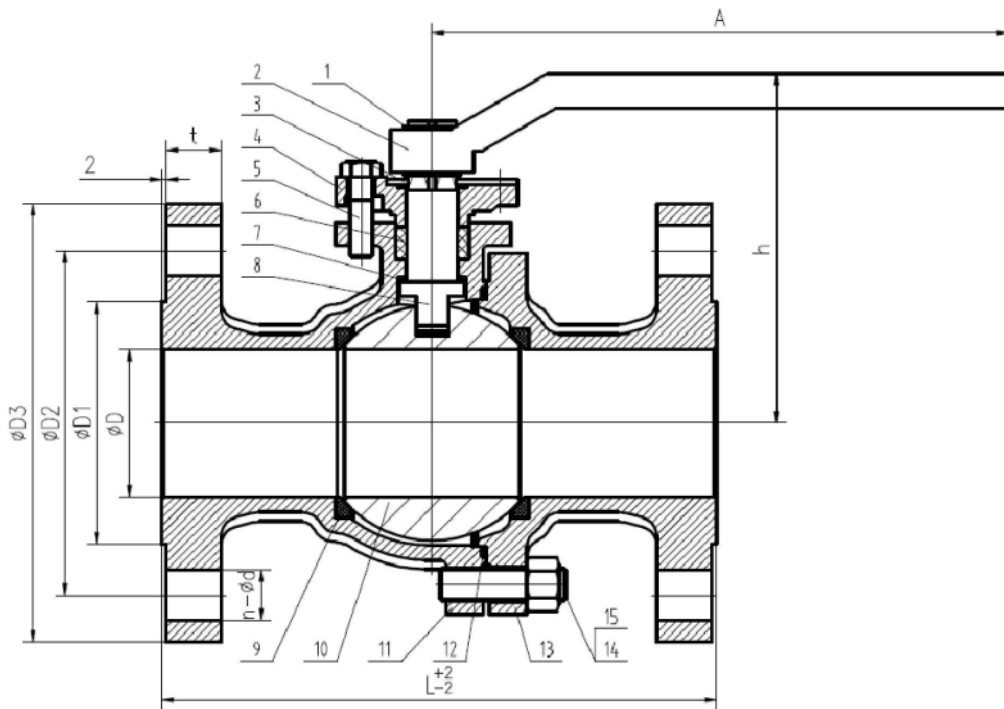


Technical Specification :

- 1.Design and manufacture: ASME B16.34
- 2.Face-to-face : ASME B16.10.
- 3.Inspection and test : API598
- 4.End flange:ASME B16.5



SIZE	DN	L	H	D	A	D1	D2	D3	t	n-φd
1/2"	15	140	71	15	145	34.9	66.7	95	12.7	4-φ15.9
3/4"	20	152	71	20	145	42.9	82.6	115	14.3	4-φ19
1"	25	165	90	25	175	50.8	88.9	125	15.9	4-φ19
1 1/4"	32	178	95	32	175	63.5	98.4	135	17.5	4-φ19
1 1/2"	40	190	128	38	250	73	114.5	155	19.1	4-φ22
2"	50	216	142	50	250	92.1	127	165	20.7	8-φ19
3"	80	282	178	78	305	127	168.3	210	28.6	8-φ22.3

MAIN PARTS AND MATERIALS

NO	Part name	Material	QTY	NO	Part name	Material	QTY
1	Ring	65Mn	2	9	Seat	RPTFE	2
2	Handle	CF8	1	10	Ball	304/316	1
3	Locking cover	304	1	11	Body	CF8/CF8M	1
4	Packing Gland	CF8	1	12	Seal	RPTFE	1
5	Hexagon nut	304	2	13	Cap	CF8/CF8M	1
6	Packing	RPTFE	1	14	Nut	304	6
7	Thrust Washer	RPTFE	1	15	Hexagon bolt	304	6
8	Stem	304/316	1	16			

Main Technical Parameter

Nominal pressure		300LB	MPa
Test Pressure	Strength test	7.5	
	Seal test	5.5	
Air seal test		0.4~0.7	
Applicable temperature		-29~150°C	
Applicable medium		Water、Oil、Gas	

2 竿 疏踪 }
 mm 1:1
 06370
 名称 2PC high mounting pad Ball Valve
 青島英利機械有限公司
 QINGDAO YINGLI MACHINERY CO., LTD