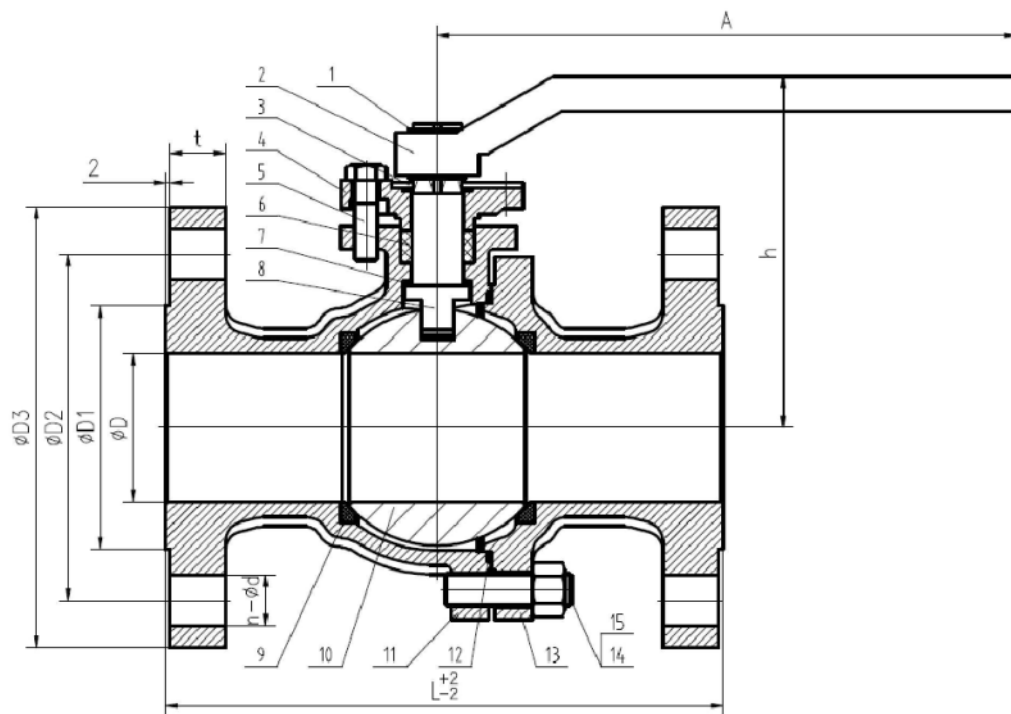


Technical Specification :

- 1.Design and manufacture: ASME B16.34
- 2.Face-to-face : ASME B16.10.
- 3.Inspection and test : API598
- 4.End flange:ASME B16.5



| SIZE | DN | L | H | D | A | D1 | D2 | D3 | t | n-φd |
|--------|----|-----|-----|----|-----|------|-------|-----|------|---------|
| 1/2" | 15 | 140 | 71 | 15 | 145 | 34.9 | 66.7 | 95 | 12.7 | 4-φ15.9 |
| 3/4" | 20 | 152 | 71 | 20 | 145 | 42.9 | 82.6 | 115 | 14.3 | 4-φ19 |
| 1" | 25 | 165 | 90 | 25 | 175 | 50.8 | 88.9 | 125 | 15.9 | 4-φ19 |
| 1 1/4" | 32 | 178 | 95 | 32 | 175 | 63.5 | 98.4 | 135 | 17.5 | 4-φ19 |
| 1 1/2" | 40 | 190 | 128 | 38 | 250 | 73 | 114.5 | 155 | 19.1 | 4-φ22 |
| 2" | 50 | 216 | 142 | 50 | 250 | 92.1 | 127 | 165 | 20.7 | 8-φ19 |
| 3" | 80 | 282 | 178 | 78 | 305 | 127 | 168.3 | 210 | 28.6 | 8-φ22.3 |



Main Technical Parameter

| | | | |
|------------------------|---------------|---------------|-----|
| Nominal pressure | | 300LB | MPa |
| Test Pressure | Strength test | 7.5 | |
| | Seal test | 5.5 | |
| | Air seal test | 0.4~0.7 | |
| Applicable temperature | | -29~150°C | |
| Applicable medium | | Water、Oil、Gas | |

MAIN PARTS AND MATERIALS

| NO | Part name | Material | QTY | NO | Part name | Material | QTY |
|----|---------------|----------|-----|----|-----------------------------------|----------------------------------|-----|
| 1 | Ring | 65Mn | 2 | 9 | Seat | RPTFE | 2 |
| 2 | Handle | CF8 | 1 | 10 | Ball | 316 | 1 |
| 3 | Locking cover | 304 | 1 | 11 | Body | WCB | 1 |
| 4 | Packing Gland | CF8 | 1 | 12 | Seal | RPTFE | 1 |
| 5 | Hexagon nut | 304 | 2 | 13 | Cap | CF8 | 1 |
| 6 | Packing | RPTFE | 1 | 14 | Nut | 304 | 6 |
| 7 | Thrust Washer | RPTFE | 1 | 15 | Hexagon bolt | 304 | 6 |
| 8 | Stem | 304/316 | 1 | 16 | | | |
| | | | | | 笔 | 疏踪 | |
| | | | | | mm | | 1:1 |
| | | | | | 名称 | 2PC high mounting pad Ball Valve | |
| | | | | | 青島英利機械有限公司 | | |
| | | | | | QINGDAO YINGLI MACHINERY CO., LTD | | |