



## PN 10/16 - DN 40...300

KAT-A 1010-F5-EW

### Product characteristics and benefits

- Resilient seated in accordance with EN 1074 (DIN 3352 - 4B)
- Face-to-face length acc. to EN 558, basic series 15 (DIN 3202, F5)
- With flange ends on both sides acc. to EN 1092-2
- Boltless bonnet with pressure supported sealing system
- Low operating torque due to plastic sliding guides on the wedge
- Maintenance-free and corrosion-resistant stem sealing
- With O-ring sealing
- Low wear due to wedge guiding and elongated stem bearing
- Suitable for vacuum of up to 90%

### Materials

- Body: Ductile iron EN-GJS-400-15 (GGG-40)
- Bonnet: Ductile iron EN-GJS-400-15 (GGG-40)
- Wedge: Ductile iron EN-GJS-400-15 (GGG-40) encapsulated with EPDM vulcanized
- Stem: Stainless steel 1.4057\*
- Stem nut: Brass

### Corrosion protection

- Internally and externally epoxy coated acc. to GSK guidelines

### Versions

- Standard version as described
- With handwheel

### Field of application

- Underground installation
- Chamber installation



### Tests and approvals

- Final inspection test acc. to EN 12266
- DVGW tested and registered
- Elastomers approved acc. to W270

### Accessories

- T-key
- Installation equipment
- Extension spindle
- Surface box cast iron
- Plastic base plate
- VAG SERIO<sup>®</sup>plus position indicator

### Note

For proper installation and safe operation please follow the installation and operation instructions:

“Installation and Operating Instructions for Valves”

### Field of application

| DN        | PN | Maximum operating pressure<br>[bar] | Maximum operating temperature for neutral liquids<br>[°C] |
|-----------|----|-------------------------------------|---|
| 40...300  | 16 | 16                                  | 50  |
| 200...300 | 10 | 10                                  | 50  |

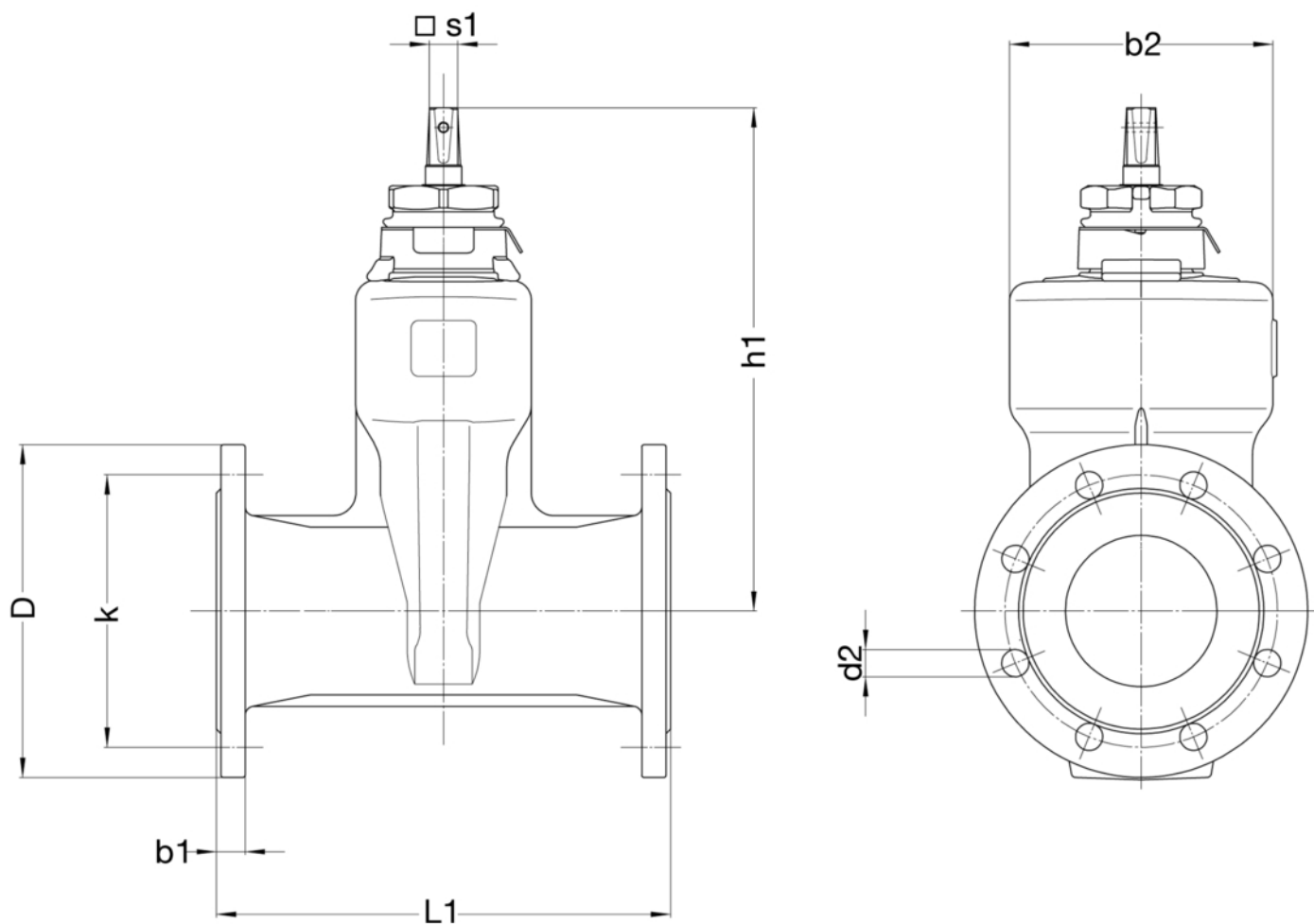
\* Stem material will be changed from 1.4021 to 1.4057

### Pressure test acc. to EN 12266

| Test pressure body with water<br>[bar] | Test pressure seat with water<br>[bar] |
|--|--|
| 24                                     | 17.6                                   |
| 15                                     | 11                                     |



**Drawing**



**Technical data**

**PN 10**

| DN             |                   | 200   | 250    | 300    |
|----------------|-------------------|-------|--------|--------|
| D              | [mm]              | 340   | 400    | 455    |
| k              | [mm]              | 295   | 355    | 410    |
| L1             | [mm]              | 400   | 450    | 500    |
| b1             | [mm]              | 20    | 22     | 24.5   |
| b2             | [mm]              | 320   | 396    | 471    |
| d2             | [mm]              | 23    | 28     | 28     |
| h1             | [mm]              | 523   | 633    | 713    |
| □ s1           | [mm]              | 24    | 27     | 27     |
| No. of holes   |                   | 8     | 12     | 12     |
| Turns/stroke   |                   | 34    | 43     | 51     |
| Weight approx. | [kg]              | 76.00 | 126.00 | 174.50 |
| Volume approx. | [m <sup>3</sup> ] | 0.11  | 0.185  | 0.26   |


**Technical data**
**PN 16**

| <b>DN</b>                         | <b>40</b> | <b>50</b> | <b>65</b> | <b>80</b> | <b>100</b> | <b>125</b> | <b>150</b> | <b>200</b> | <b>250</b> | <b>300</b> |
|-----------------------------------|-----------|-----------|-----------|-----------|------------|------------|------------|------------|------------|------------|
| D [mm]                            | 150       | 165       | 185       | 200       | 220        | 250        | 285        | 340        | 400        | 455        |
| k [mm]                            | 110       | 125       | 145       | 160       | 180        | 210        | 240        | 295        | 355        | 410        |
| L1 [mm]                           | 240       | 250       | 270       | 280       | 300        | 325        | 350        | 400        | 450        | 500        |
| b1 [mm]                           | 19        | 19        | 19        | 19        | 19         | 19         | 19         | 20         | 22         | 24.5       |
| b2 [mm]                           | 125       | 125       | 160       | 160       | 174        | 220        | 246        | 320        | 396        | 471        |
| d2 [mm]                           | 19        | 19        | 19        | 19        | 19         | 19         | 23         | 23         | 28         | 28         |
| h1 [mm]                           | 245       | 245       | 280       | 280       | 334        | 379        | 417        | 523        | 633        | 713        |
| □ s1 [mm]                         | 14        | 14        | 17        | 17        | 19         | 19         | 19         | 24         | 27         | 27         |
| No. of holes                      | 4         | 4         | 4         | 8         | 8          | 8          | 8          | 12         | 12         | 12         |
| Turns/stroke                      | 11        | 13.5      | 16        | 20        | 20         | 25         | 30         | 34         | 43         | 51         |
| Weight approx. [kg]               | 10.50     | 11.50     | 16.50     | 18.00     | 24.50      | 32.50      | 44.00      | 76.00      | 126.00     | 174.50     |
| Volume ap-prox. [m <sup>3</sup> ] | 0.015     | 0.015     | 0.02      | 0.025     | 0.035      | 0.05       | 0.07       | 0.11       | 0.185      | 0.26       |