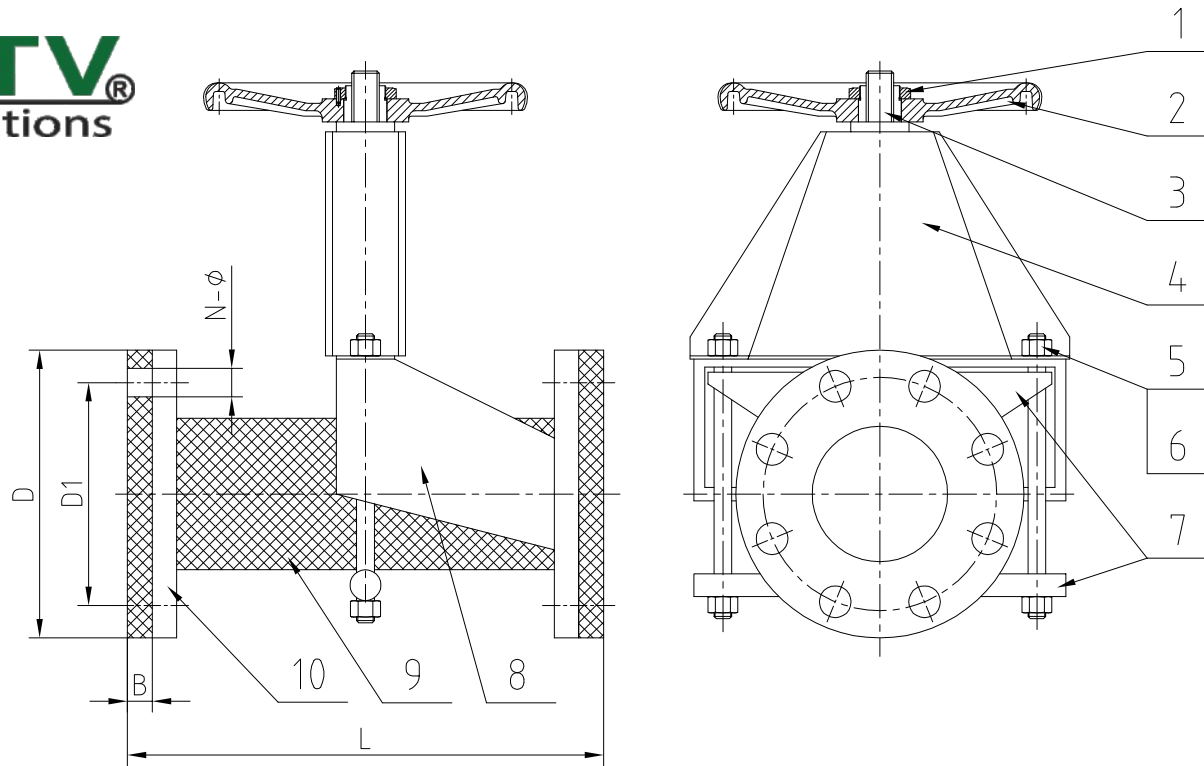


TAG NO. :



Performance Standard		
Nominal Bore	NPS	2"~8"
Nominal Pressure	Class	125LB
Pressure Test		
Shell Test	1.0	Mpa
Seal Test	/	
Backseat Test	/	
Air Test	0.6	
Working Temperature	-29°C ~ +80°C	
Suitable Medium	Water.Oil.Gas.Steam. etc	

- 1.Flange dimension conforms as to: ASME B16.5 FF
- 2.Testing standard as to: API 598
- 3.Face-To-Face demension as to: MFR STD
- 4.Pressure-temperature conforms as to: ASME B16.34
- 5.Design & Manufacture as to: ASME B16.34

Unit:mm

SIZE INCH	L	D	D1	B	N-φ
2"	203	φ150	φ120.7	12	4-φ19
2 1/2"	250	φ180	φ139.7	14	4-φ19
3"	305	φ190	φ152.4	15	4-φ19
4"	406	φ230	φ190.5	20	8-φ19
6"	406	φ280	φ241.3	20	8-φ22
8"	584	φ345	φ298.5	23	8-φ22

10	Retainer Flange	ASTM A105		
9	Sleeves	Natural Rubber		Fiber Reinforced
8	Body	Carbon Steel		
7	Closure	Carbon Steel		
6	Bolt	A193 B7		
5	Nut	A194 2H		
4	Yoke	Carbon Steel		
3	Stem	AISI 1025		
2	Handwheel	ASTM A536		
1	Locking Nut	A194 2H		
NO.	NAME	MATERIAL	QTY	REMARK

DATE APPD	Mar. 22. 2015	PINCH VALVE OPEN BODY	
APPD BY			
CHECK BY			
DSCND BY			
DRAWD BY			
Drawing No. :		NPS 2"~8" CLASS 125LB FF	
		Body: Carbon Steel	
		Sleeves: NR+Fiber Reinforced	