

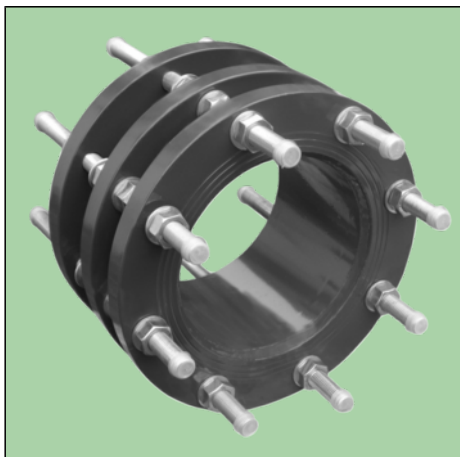
VAG Dismantling Joint, rigid
with continuous threaded rigid anchor bolts on both sides, welded steel - epoxy



Water

PN 10/16/25 - DN 40...1600

KAT-A 5010-b-E



Product characteristics and benefits

- With flange ends on both sides acc. to EN 1092-2
- Suitable for transmission of pipe forces
- For easy installation and dismantling of valves

Materials

- Body: Steel S235JRG2
- Sealing: NBR
- Threaded anchor bolt: Steel S235JRG2 electrogalvanized

Corrosion protection

- Inside and outside epoxy coating

Versions

- Standard version as described
- With outside protective jacket of steel S235JRG2 electrogalvanized for buried installation
- Bigger sizes available on request
- Special designs available on request
- Other pressure ratings available on request

Field of Application

- Underground installation
- Chamber installation
- Installation in plants

Note

For proper installation and safe operation please follow the installation and operation instructions:

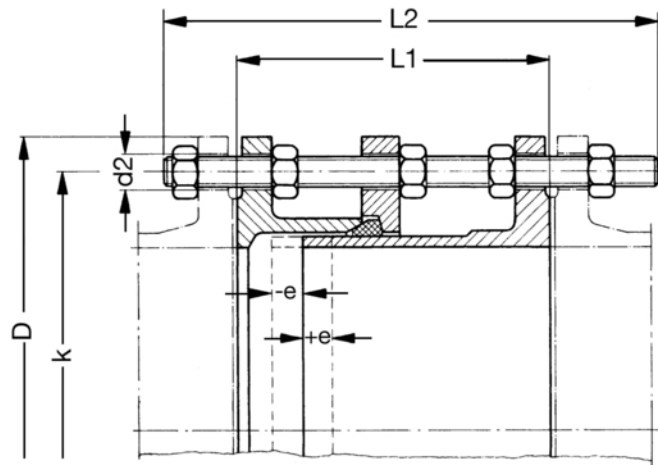
“Installation and Operating Instructions for Valves”

Field of application

DN	PN	Maximum operating pressure [bar]	Maximum operating temperature for neutral liquids [°C]
40...1200	25	25	50
40...1500	16	16	50
200...1600	10	10	50



Drawing



e = +/- 25 mm displacement
L1 = Face-to-face length in intermediate position

Technical data

PN 25

DN		40	50	65	80	100	125	150	175	200	250	300	350
D	[mm]	150	165	185	200	235	270	300	330	360	425	485	555
L1	[mm]	190	200	200	210	220	220	230	230	230	250	250	270
L2	[mm]	310	310	310	330	340	370	370	370	370	410	410	440
d2	[mm]	18	18	18	18	22	26	26	26	26	30	30	33
k	[mm]	110	125	145	160	190	220	250	280	310	370	430	490
No. of holes		4	4	8	8	8	8	8	12	12	12	12	16
Volume approx.	[m ³]	0.006	0.008	0.012	0.014	0.020	0.028	0.036	0.044	0.052	0.082	0.105	0.148
Weight approx.	[kg]	10.00	13.00	18.00	22.00	32.00	43.00	52.00	65.00	76.00	103.00	134.00	196.00

PN 25

DN		400	450	500	600	700	800	900	1000	1200
D	[mm]	620	670	730	845	960	1085	1185	1320	1530
L1	[mm]	280	280	300	320	340	360	380	400	450
L2	[mm]	480	480	480	520	530	600	600	650	720
d2	[mm]	36	36	36	39	42	48	48	56	56
k	[mm]	550	600	660	770	875	990	1090	1210	1420
No. of holes		16	20	20	20	24	24	28	28	32
Volume approx.	[m ³]	0.202	0.240	0.280	0.408	0.536	0.776	0.926	1.245	1.854
Weight approx.	[kg]	248.00	281.00	327.00	436.00	573.00	800.00	888.00	1272.00	1870.00

PN 16

DN		40	50	65	80	100	125	150	175	200	250	300	350
D	[mm]	150	165	185	200	220	250	285	315	340	405	460	520
L1	[mm]	180	180	180	200	200	200	200	220	220	230	250	260
L2	[mm]	280	280	280	310	310	310	320	340	340	370	410	410
d2	[mm]	18	18	18	18	18	18	22	22	22	26	26	26
k	[mm]	110	125	145	160	180	210	240	270	295	355	410	470
No. of holes		4	4	4	8	8	8	8	8	12	12	12	16
Volume approx.	[m ³]	0.006	0.008	0.009	0.014	0.016	0.020	0.028	0.036	0.042	0.066	0.094	0.122
Weight approx.	[kg]	9.00	11.00	13.00	18.00	21.00	26.00	35.00	45.00	52.00	76.00	93.00	129.00



Technical data

PN 16

DN		400	450	500	600	700	800	900	1000	1100	1200	1300	1400
D	[mm]	580	640	715	840	910	1025	1125	1255	1355	1485	1585	1685
L1	[mm]	270	270	280	300	300	320	320	340	340	360	370	380
L2	[mm]	430	430	440	480	480	520	520	560	560	600	610	630
d2	[mm]	30	30	33	36	36	39	39	42	42	48	48	48
k	[mm]	525	585	650	770	840	950	1050	1170	1270	1390	1490	1590
No. of holes		16	20	20	20	24	24	28	28	32	32	32	36
Volume approx.	[m ³]	0.158	0.194	0.246	0.372	0.436	0.600	0.724	0.970	1.130	1.455	1.685	1.966
Weight approx.	[kg]	164.00	190.00	243.00	332.00	368.00	480.00	548.00	719.00	813.00	1110.00	1226.00	1350.00

PN 16

DN		1500
D	[mm]	1820
L1	[mm]	400
L2	[mm]	660
d2	[mm]	52
k	[mm]	1710
No. of holes		36
Volume approx.	[m ³]	2.200
Weight approx.	[kg]	1642.00

PN 10

DN		200	250	300	350	400	450	500	600	700	800	900	1000
D	[mm]	340	395	445	505	565	615	670	780	895	1015	1115	1230
L1	[mm]	220	220	220	230	230	250	260	260	260	290	290	290
L2	[mm]	340	360	360	360	370	390	390	410	410	460	460	480
d2	[mm]	22	22	22	22	26	26	26	30	30	33	33	36
k	[mm]	295	350	400	460	515	565	620	725	840	950	1050	1160
No. of holes		8	12	12	16	16	20	20	20	24	24	28	28
Volume approx.	[m ³]	0.042	0.062	0.078	0.100	0.130	0.162	0.192	0.274	0.360	0.520	0.628	0.800
Weight approx.	[kg]	49.00	64.00	73.00	96.00	124.00	141.00	160.00	207.00	259.00	354.00	407.00	488.00

PN 10

DN		1100	1200	1300	1400	1500	1600
D	[mm]	1340	1455	1575	1675	1785	1915
L1	[mm]	300	320	340	360	380	390
L2	[mm]	480	520	530	560	590	600
d2	[mm]	36	39	42	42	42	48
k	[mm]	1270	1380	1490	1590	1700	1820
No. of holes		32	32	32	36	36	40
Volume approx.	[m ³]	0.950	1.210	1.314	1.728	2.066	2.420
Weight approx.	[kg]	589.00	748.00	914.00	1037.00	1162.00	1525.00

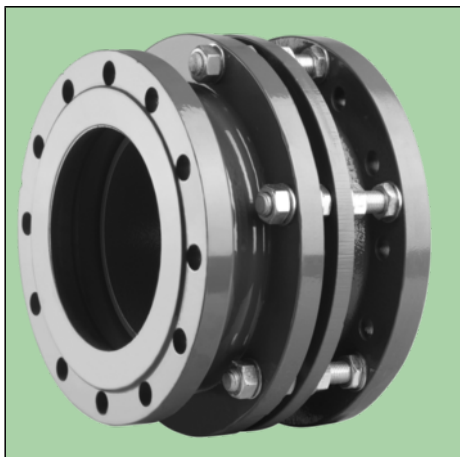
VAG Dismantling Joint, rigid
with continuous threaded anchor bolts on one side,
welded steel - epoxy



Water

PN 10/16 - DN 40...1600

KAT-A 5010-e-E



Product characteristics and benefits

- With flange ends on both sides acc. to EN 1092-2
- Suitable for transmission of pipe forces
- For easy installation and dismantling of valves

Materials

- Body: Steel S235JRG2
- Sealing: NBR
- Threaded anchor bolt: Steel S235JRG2 electrogalvanized

Corrosion protection

- Inside and outside epoxy coating

Versions

- Standard version as described
- With outside protective jacket of steel S235JRG2 electrogalvanized for buried installation
- Bigger sizes available on request
- Special designs available on request
- Other pressure ratings available on request

Field of Application

- Underground installation
- Chamber installation
- Installation in plants

Note

For proper installation and safe operation please follow the installation and operation instructions:

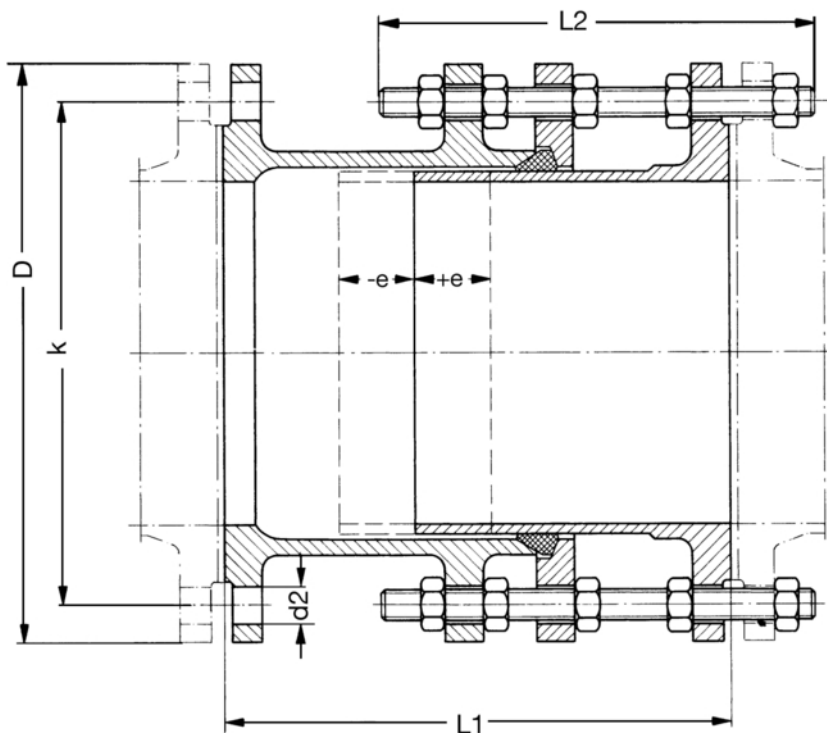
“Installation and Operating Instructions for Valves”

Field of application

DN	PN	Maximum operating pressure [bar]	Maximum operating temperature for neutral liquids [°C]
40...1400	16	16	50
200...1400	10	10	50



Drawing



$e = \pm 25$ mm displacement

$L1$ = Face-to-face length in intermediate position

Technical data

PN 16

DN		40	50	65	80	100	125	150	175	200	250	300	350
D	[mm]	150	165	185	200	220	250	285	315	340	405	460	520
L1	[mm]	300	300	300	300	300	300	350	350	350	375	375	425
L2	[mm]	250	250	250	250	250	250	290	290	290	320	320	350
d2	[mm]	18	18	18	18	18	18	22	22	22	26	26	26
k	[mm]	110	125	145	160	180	210	240	270	295	355	410	470
No. of holes		4	4	4	8	8	8	8	8	12	12	12	16
Volume approx.	[m ³]	0.005	0.006	0.008	0.012	0.014	0.016	0.025	0.030	0.036	0.058	0.074	0.104
Weight approx.	[kg]	12.00	14.00	17.00	23.00	28.00	35.00	50.00	59.00	67.00	100.00	118.00	166.00

PN 16

DN		400	450	500	600	700	800	900	1000	1100	1200	1300	1400
D	[mm]	580	640	715	840	910	1025	1125	1255	1355	1485	1585	1685
L1	[mm]	425	425	450	475	475	525	525	550	575	600	625	625
L2	[mm]	350	350	380	400	400	450	450	450	450	525	525	525
d2	[mm]	30	30	33	36	36	39	39	42	42	48	48	48
k	[mm]	525	585	650	770	840	950	1050	1170	1270	1390	1490	1590
No. of holes		16	20	20	20	24	24	28	28	32	32	32	36
Volume approx.	[m ³]	0.128	0.158	0.214	0.310	0.364	0.520	0.570	0.778	0.908	1.272	1.450	1.640
Weight approx.	[kg]	207.00	236.00	310.00	419.00	449.00	614.00	696.00	893.00	1013.00	1396.00	1552.00	1680.00

VAG Dismantling Joint, rigid
with continuous threaded anchor bolts on one side,
welded steel - epoxy



Water

Technical data

PN 10

DN		200	250	300	350	400	450	500	600	700	800	900	1000
D	[mm]	340	395	445	505	565	615	670	780	895	1015	1115	1230
L1	[mm]	350	350	350	350	375	375	375	400	400	450	450	475
L2	[mm]	290	290	290	290	320	320	320	340	340	380	380	420
d2	[mm]	22	22	22	22	26	26	26	30	30	33	33	36
k	[mm]	295	350	400	460	515	565	620	725	840	950	1050	1160
No. of holes		8	12	12	16	16	20	20	20	24	24	28	28
Volume approx.	[m ³]	0.036	0.050	0.062	0.080	0.112	0.134	0.158	0.226	0.300	0.430	0.520	0.698
Weight approx.	[kg]	63.00	89.00	102.00	126.00	162.00	178.00	200.00	269.00	334.00	457.00	520.00	636.00

PN 10

DN		1100	1200	1300	1400	1500	1600
D	[mm]	1340	1455	1575	1675	1785	1915
L1	[mm]	475	525	550	550	550	600
L2	[mm]	420	450	450	470	470	490
d2	[mm]	36	39	42	42	42	48
k	[mm]	1270	1380	1490	1590	1700	1820
No. of holes		32	32	32	36	36	40
Volume approx.	[m ³]	0.830	1.048	1.232	1.450	1.646	1.975
Weight approx.	[kg]	745.00	985.00	1186.00	1258.00	1470.00	1905.00