

Model: JY-11C

Rating: PN40



Design feature:

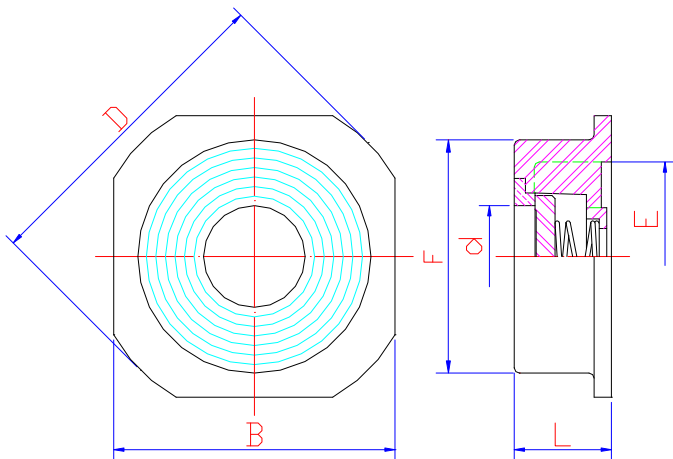
- Applications for Hydraulic, Chemical, Steam, Oil/ Gas, Oxygen, Vacuum.
- Reduced Dimensions And Weights.
- Installation In Any Position Even With Downward Flow.
- Suitable For Working As Over press Valve, Vacuum Breaker Valve, Bottom Valve.
- With Metal To Metal Seat.
- Full port, Very Low Pressure Drops.
- Investment cast body construction.
- DIN 50049-3.1 Certificate Available

Specifications:

- Flow bore: Full port.
- Rating: PN40; 150 PSI Saturated Steam.
- Temperature: -20°F ~ 500°F
- Materials: EN10213-4 1.4408
- Size range: 1/2"~ 6".

Standard:

- Overall Length To DIN3202 K4..
- Inspection & testing according to API 598.
- PED 97/23/EC; ISO 9001



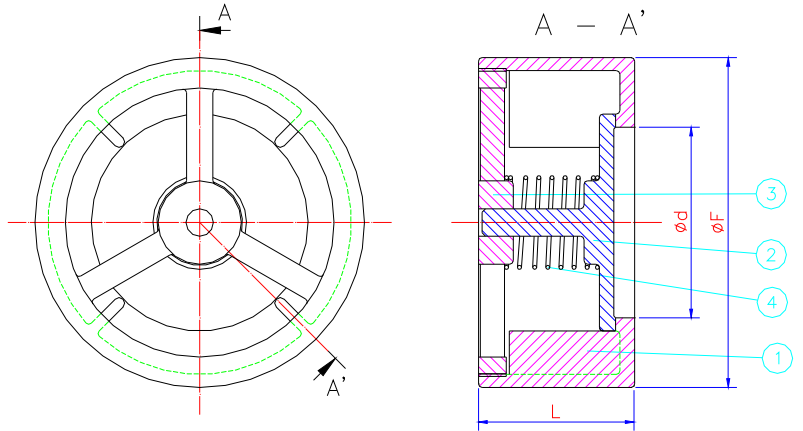
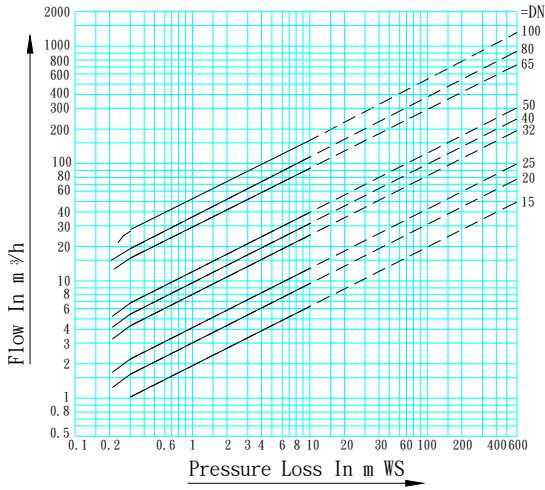
Opening pressure standard in Mbar

Size	Flow direction		
	↑	↓	→
DN15	25	21	23
DN20	25	21	23
DN25	25	21	23
DN32	27	21	24
DN40	29	21	25
DN50	29	21	25
DN65	31	21	25
DN80	32	21	26
DN100	33	21	27

Dimensions List

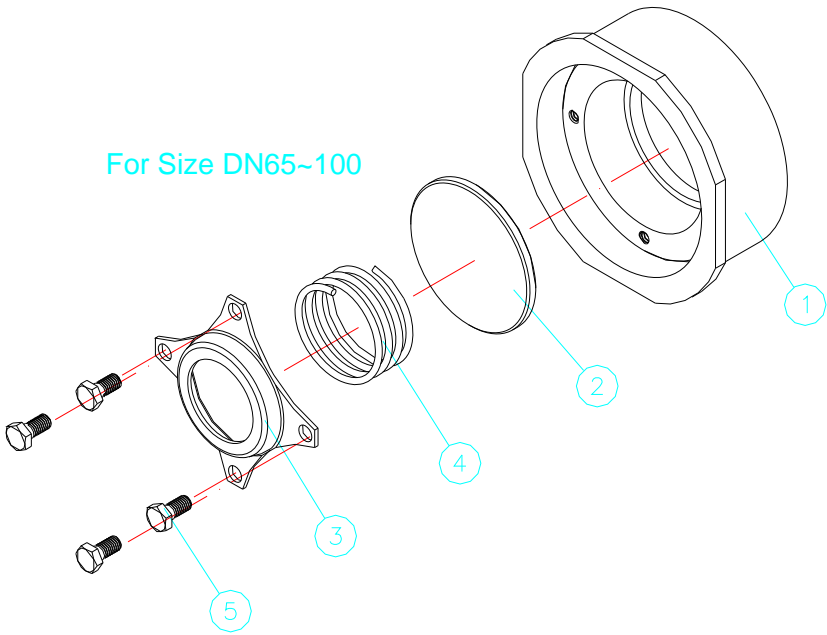
Size	d	L	F	E	B	D
1/2"	15	16	40	34	45	53
3/4"	20	19	50	43	55	63
1"	25	22	60	52	65	73
1-1/4"	32	28	73	63.5	78	84
1-1/2"	38	32	83	73	88	94
2"	50	40	93	82	98	107
2-1/2"	65	46	114	101	118	126
3"	80	50	130	116	134	144
4"	100	60	150	134	154	162
5"	110	90	190	--	--	--
6"	130	105	218	--	--	--

Pressure Loss Curves
(Referred to Water at 20°C)

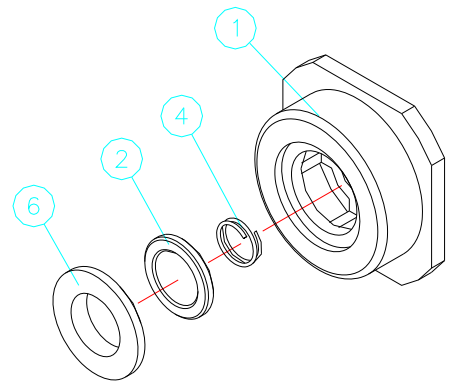


DN125 & DN150

For Size DN65~100



For Size DN15~50



MATERIALS LIST:

NO	PART NAME	MATERIAL	NO	PART NAME	MATERIAL
1	BODY	1.4408	7		
2	DISC	SS 316	8		
3	SPRING CAP	SS 316	9		
4	SPRING	SS 316	10		
5	SCREW	SS 316	11		
6	INSERT	1.4408	12		