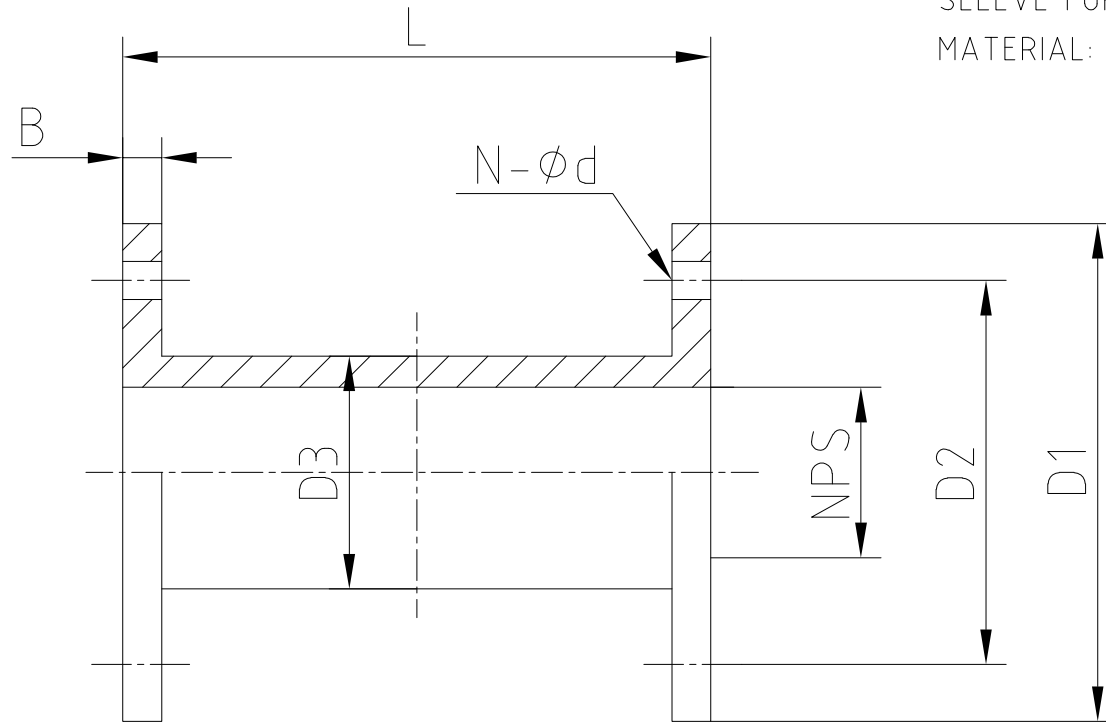


SLEEVE FOR PINCH VALVE OPEN BODY
MATERIAL: REINFORCED NATURAL RUBBER



FLANGE: ASME B16.5 125LB/150LB FLAT FACE WITH HOLES
MATERIAL: REINFORCED NATURAL RUBBER

SIZE NPS	L	D1	D2	N-φd	D3	B
2"	203	150	120.7	4-φ19	74.8	12
3"	305	190	152.4	4-φ19	106.2	15
4"	406	230	190.5	8-φ19	141.6	20
6"	406	280	241.3	8-φ22	192.4	20
8"	650	345	298.5	8-φ22	249.2	23