

AISI 150LB, 125LB/DIN PN16, PN10

1	Nondestructive Testing		
1.1	Pressure Test	Mandatory	Yes
1.2	Chemical composition certification	Mandatory	Yes
1.3	Penetrant Test	All Body Surface	Yes
1.4	Magnetic particle testing	All Body Surface	Yes

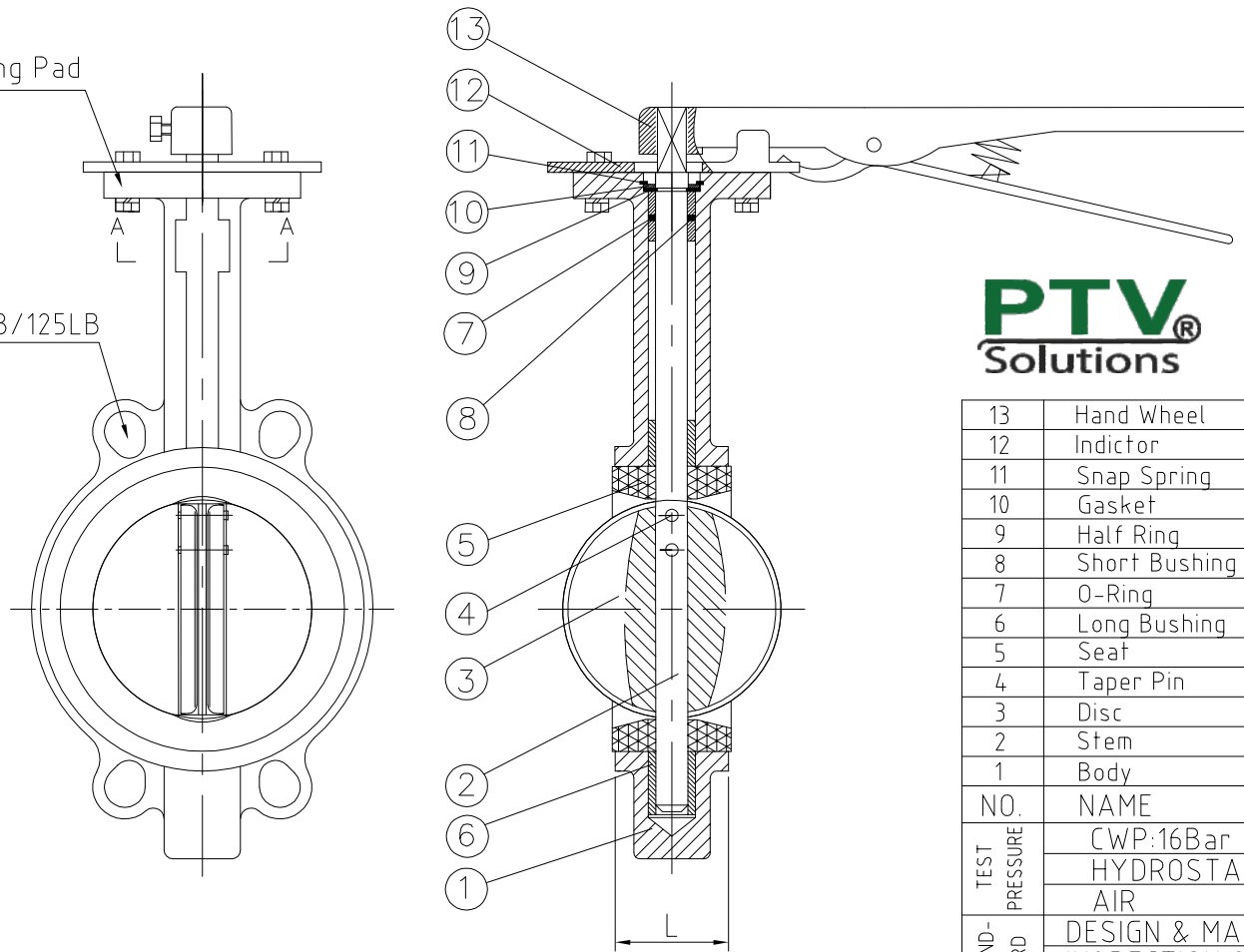
SIZE	DN	L	Between Flange	ISO 5211 PAD NO.	φD1	φD2	n-φd	TXT	h	Torque N*M	Weight
1 1/2"	40	42	150LB/125LB/PN16/PN10	F05	φ90	φ50	4-φ8	9X9	30	17	2.2 KG
2"	50	42	150LB/125LB/PN16/PN10	F05	φ90	φ50	4-φ8	9X9	30	17	2.5 KG
2 1/2"	65	44.7	150LB/125LB/PN16/PN10	F05	φ90	φ50	4-φ8	9X9	30	25	2.7 KG
3"	80	45.2	150LB/125LB/PN16/PN10	F05	φ90	φ50	4-φ8	9X9	30	38	3.5 KG
4"	100	52.1	150LB/125LB/PN16/PN10	F07	φ90	φ70	4-φ10	11X11	30	56	4.4 KG
5"	125	54.4	150LB/125LB/PN16/PN10	F07	φ90	φ70	4-φ10	14X14	30	90	6.1 KG
6"	150	55.8	150LB/125LB/PN16/PN10	F07	φ90	φ70	4-φ10	14X14	30	124	7 KG
8"	200	60.6	150LB/125LB/PN16/PN10	F10	φ125	φ102	4-φ12	17X17	40	233	15 KG
10"	250	65.6	150LB/125LB/PN16/PN10	F10	φ125	φ102	4-φ12	22X22	45	392	21 KG
12"	300	76.9	150LB/125LB/PN16/PN10	F10	φ125	φ102	4-φ12	22X22	45	560	28 KG

- * 1. The torque without Safety factor.
- * 2. Safety factor of 1.3 is recommended.

7	O-Ring	Viton		
6	Short Bushing	PTFE	2	
5	Seat	Viton	1	
4	Disc	A351 CF3M	1	
3	Stem	A276 SS316L	1	
2	Long Bushing	PTFE	2	
1	Body	A351 CF3M	1	
NO.	NAME	MATERIAL	QTY	REMARK
TEST PRESSURE	CWP:16Bar	SHELL		SEAL
	HYDROSTATIC	24 bar		17.6 bar
	AIR	6 bar		6 bar
STANDARD	DESIGN CODE	API 609		
	INSPECTION & TEST	API 598		
	END STANDARD	ASME 150LB, 125LB / DIN PN16, PN10		
	FACE TO FACE	API 609		
	WORKING TEMPERATURE	-29C° ~ +120C°		
TITLE: CONCENTRIC BUTTERFLY VALVE SQUARE BARE SHAFT NPS 1 1/2"~12" - 150LB/125LB/PN16/PN10 - WAFER - CF3M/SS316L/Viton				
APPROVED		DWG NO.		REV
CHECKED				
DRAWN				
DESIGNED		SCALE		UNIT mm
PTV[®] Solutions				

ISO 5211 Mounting Pad

PN16/PN10/150LB/125LB



SIZE	DN	L	Between Flange
1 1/2"	40	42	PN16/PN10/150LB/125LB
2"	50	42	PN16/PN10/150LB/125LB
2 1/2"	65	44.7	PN16/PN10/150LB/125LB
3"	80	45.2	PN16/PN10/150LB/125LB
4"	100	52.1	PN16/PN10/150LB/125LB
5"	125	54.4	PN16/PN10/150LB/125LB
6"	150	55.8	PN16/PN10/150LB/125LB

PTV
Solutions

13	Hand Wheel	ASSEMBLY	1	
12	Indicator	CARBON STEEL	1	
11	Snap Spring	SK7	1	
10	Gasket	SS316	1	
9	Half Ring	SS316	1	
8	Short Bushing	PTFE	2	
7	O-Ring	NBR	1	
6	Long Bushing	PTFE	2	
5	Seaf	Viton	1	
4	Taper Pin	A276 SS316L	2	
3	Disc	A351 CF3M	1	
2	Stem	A276 SS316L	1	
1	Body	A351 CF3M	1	
NO.	NAME	MATERIAL	QTY	
TEST PRESSURE	CWP:16Bar	SHELL	SEAL	
	HYDROSTATIC	24 bar	17.6 bar	
	AIR	6 bar	6 bar	
STANDARD	DESIGN & MANUFACTURE	API 609		
	INSPECTION & TEST	API 598		
	END STANDARD	AISI 150LB, 125LB / DIN PN16, PN10		
	FACE TO FACE	API 609		

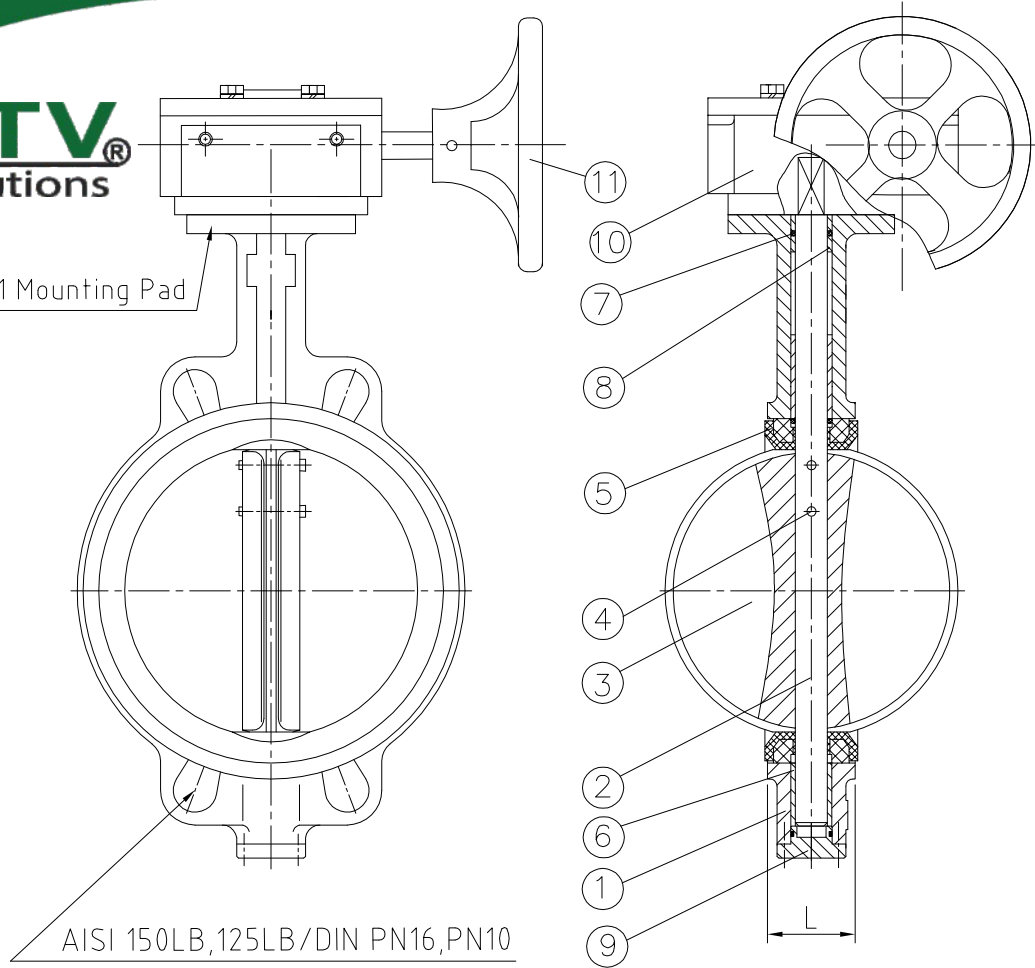
TITLE :HANDLEVER WAFER BUTTERFLY VALVE
1 1/2" ~ 6"- 150LB/125LB/PN16/PN10 -WAFER

1	Nondestructive Testing		
1.1	Pressure Test	API 598	Yes
1.2	Chemical composition certification	Mandatory	Yes
1.3	Penetrant Test	All Body Surface	Yes
1.4	Magnetic particle testing	All Body Surface	Yes

APPROVED		DWG NO.	REV
CHECKED		Serie BVW Advance 7	
DRAWN			
DESIGNED		SCALE	UNIT mm

PTV
Solutions

ISO 5211 Mounting Pad



SIZE	DN	L	Between Flange
8"	200	60.6	PN16/PN10/150LB/125LB
10"	250	65.6	PN16/PN10/150LB/125LB
12"	300	76.9	PN16/PN10/150LB/125LB

11	Hand Wheel	GGG50	1	
10	Worm Gear	GGG50	1	
9	Bottom Cover	A351 CF3M	1	
8	Short Bushing	Luberized Bronze	2	
7	O-Ring	NBR	3	
6	Long Bushing	Luberized Bronze	2	
5	Seat	Viton	1	
4	Taper Pin	A276 SS316L	1	
3	Disc	A351 CF3M	1	
2	Stem	A276 SS316L	1	
1	Body	A351 CF3M	1	
NO.	NAME	MATERIAL	QTY	
TEST PRESSURE	CWP:16Bar	SHELL		SEAL
	HYDROSTATIC	24 bar		17.6 bar
	AIR	6 bar		6 bar
STAND-ARD	DESIGN CODE	API 609		
	INSPECTION & TEST	API 598		
	END STANDARD	AISI 150LB, 125LB / DIN PN16, PN10		
	FACE TO FACE	API 609		

TITLE : GEAR OPERATION WAFER BUTTERFLY VALVE
8"-12"- 150LB/125LB/PN16/PN10 -WAFER

APPROVED		DWG NO.	REV
CHECKED		Serie BVW Advance 7	
DRAWN			
DESIGNED		SCALE	UNIT mm

1	Nondestructive Testing		
1.1	Pressure Test	API 598	Yes
1.2	Chemical composition certification	Mandatory	Yes
1.3	Penetrant Test	All Body Surface	Yes
1.4	Magnetic particle testing	All Body Surface	Yes